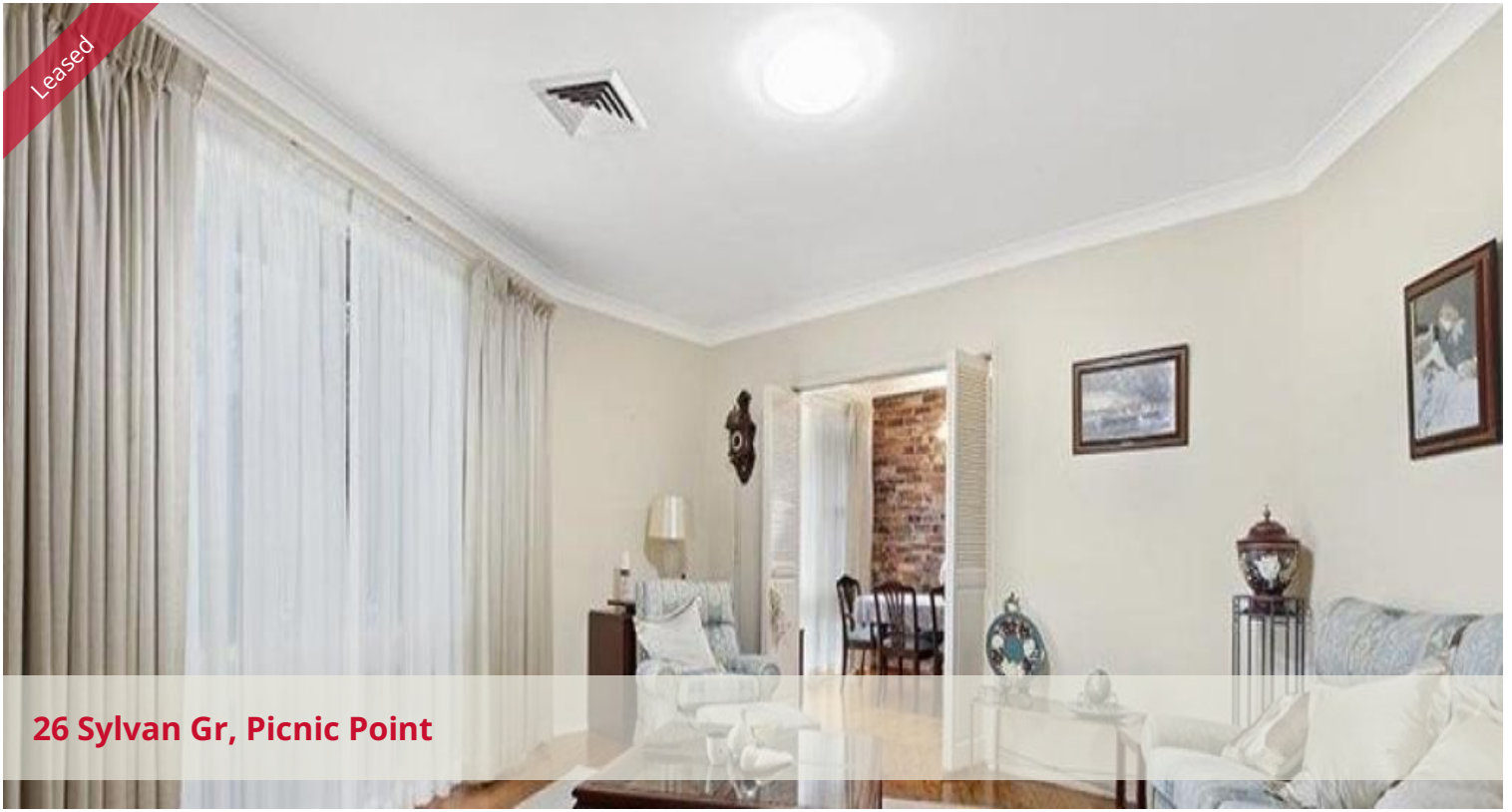


Leased



26 Sylvan Gr, Picnic Point



REDUCED.....Neat as a Pin....terrific family home.

Neatly presented with polished floorboards throughout.

No dirty or dusty carpets to contend with, making this an allergy-free friendly home!

Are you looking for comfort & quality with spacious living areas?

Low maintenance & easy care. Cul de sac location?

Features an updated open plan kitchen, a family friendly layout, ducted air-conditioning, timber flooring, master bedroom with ensuite & walk in robe. Three bedrooms plus a games, rumpus or media room.

Located just moment's to popular schools, shops and transport. Ready to move straight in.

Register your interest with us now so we can arrange an inspection. Applications are only available upon an inspection.

Disclaimer: "We have obtained all information in this document from sources we believe to be reliable; however, we cannot guarantee its accuracy. Prospective tenants are advised to carry out their own investigations..."

3 2 1 550 m2

Price	\$595.00 per week
Property Type	Rental
Property ID	50
Land Area	550 m2

Agent Details

Michelle Murray
michelle@aliverealty.com.au
0403 195 465

Office Details

Alive Realty
0403 195 465



The above information provided has been furnished to us by the vendor/s. We have not verified whether or not that information is accurate and do not have any belief in one way or the other in its accuracy. We do not accept any responsibility to any person for its accuracy and do no more than pass it on. All interested parties should make and rely upon their own inquiries in order to determine whether or not this information is in fact accurate.